

NHS Kent and Medway

# Critical Medication List for Care Homes

Best Practice Guidance

NHS Kent and Medway - Integrated Care Team	Approval date: October 2025	Version: 2.0	Review date: October 2027
	Status: <b>Approved</b>	Page 1	

# Version History

Version	Status	Date	Approved by	Comments
<b>NHS Kent and Medway Integrated Care Board</b>				
1.0	Approved	August 2022	KMMOC, Clinical Cabinet	
2.0	Not approved	August 2025		<ul style="list-style-type: none"> <li>• Added cover page and version history.</li> <li>• Removed Detemir (not on formulary) and added Amelog, Edoxaban, Fiasp, Lyumjev, Midazolam (Buccolam), Trurapi, and Sirolimus.</li> <li>• Removed Brand name Azasan.</li> <li>• Changed Humalog, Humalog Mix25, and Humalog Mix50 to Humalog (Mix 25/50)</li> <li>• Changed Humulin, Humulin I, Humulin M3, and Humulin S to Humulin (I/M3/S)</li> <li>• Updated find a pharmacy link</li> </ul>

To ensure medicines are most effective and to prevent residents from harm, it is important for some medicines to be given specific times.

The following list of medicines are considered critical and must never be omitted (missed) or delayed without a clinical reason which has been discussed with a health care professional. The reason for omission should be documented on the resident MAR chart and in their care notes.

If you are unfamiliar with any medication you must ensure you find out what it is prior to administering it to a resident. This information can be found in the BNF or patient information leaflet which can be found inside the box the medicine was supplied in. You can also contact your community pharmacy for help and advice.

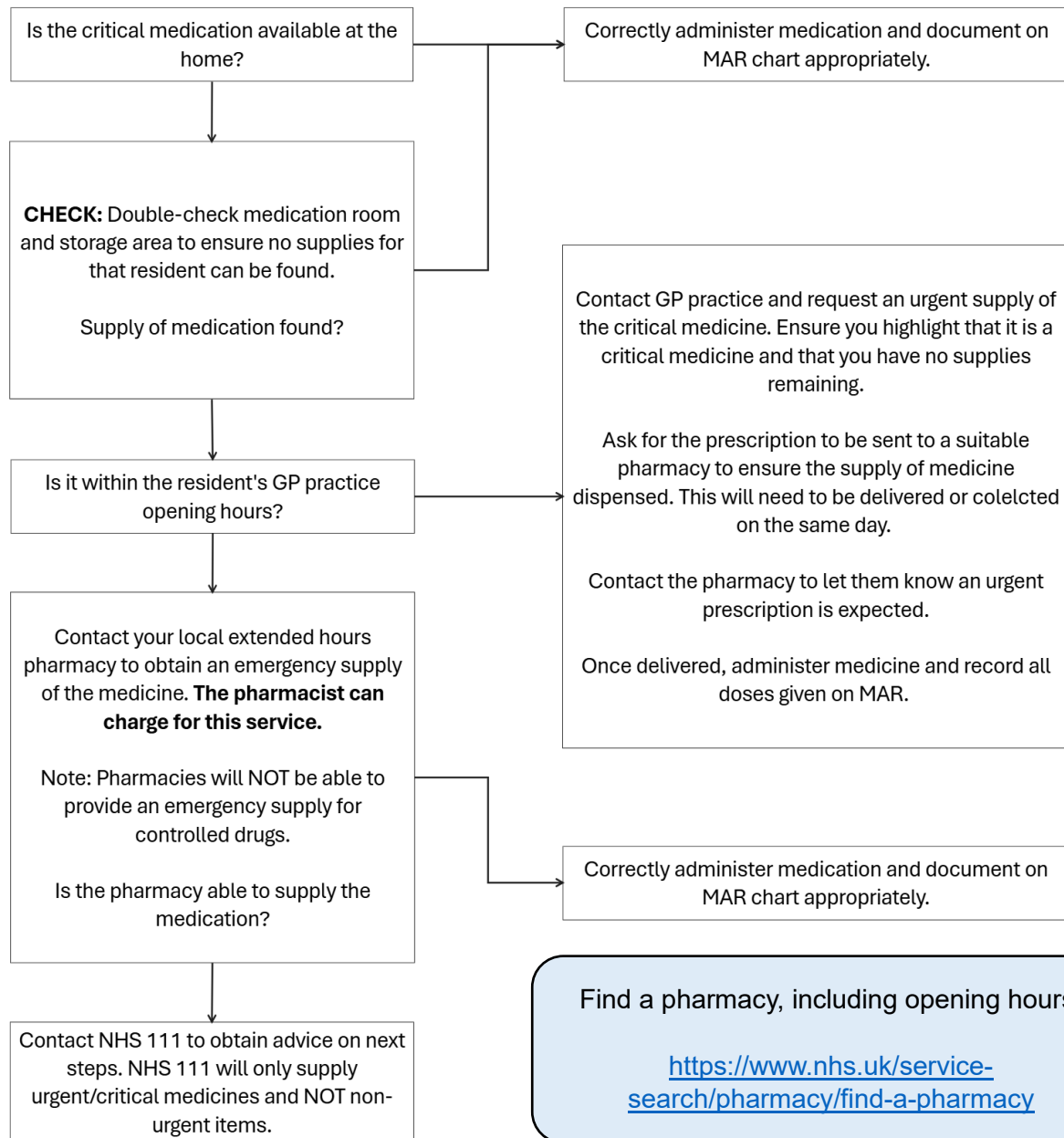
Examples of common brands have been given below however other brands are available; please contact your community pharmacy for advice if you are unsure.

**Omission or delay of a critical medications is a patient safety incident and should be reported appropriately.**

<b>This list is a guide and is not exhaustive</b>	
<b>Drug Name / Class</b>	<b>Examples</b>
<b>All medicines used in an emergency</b>	<i>Salbutamol inhaler, Anaphylaxis treatments such as Emerade ®, Epipen ®, Jext ®, Midazolam (Buccolam ®)</i>
<b>Anticoagulants</b>	<i>Apixaban, Acenocoumarol, Dabigatran, Dalteparin, Edoxaban (Lixiana ®), Enoxaparin (Inhixa ®), Heparin, Rivaroxaban, Tinzaparin, Warfarin</i>
<b>Antiepileptics</b>	<i>Carbamazepine (Tegretol ®), Lamotrigine, Levetiracetam (Keppra ®), Phenytoin, Sodium Valproate (Epilim ®)</i>
<b>Anti-infectives</b>	<i>Antibiotics, Antifungals, Antimalarials, Antiretrovirals, Antivirals</i>
<b>Antipsychotics and all medication prescribed for long-term mental health conditions</b>	<i>Clozapine (Clozaril ®), Lithium (Priadel ®), Haloperidol, Olanzapine, Risperidone, Quetiapine, Valproic Acid (Depakote ®)</i>
<b>Corticosteroids</b>	<i>Budesonide (Budenofalk ®, Entocort ®, Pulmicort ®), Dexamethazone, Hydrocortisone, Prednisolone</i>
<b>Insulin</b>	<i>Abasaglar, Actrapid, Admelog, Apidra, Fiasp, Humalog (Mix25 / Mix50), Humulin (I / M3 / S), Insulatard, Insuman basal, Insuman Comb 15, Insuman Comb 25, Insuman Rapid, Lantus, Levemir, Lyumjev, Novomix 30, Toujeo, Tresiba, Trurapi</i>
<b>Immunosuppressants</b>	<i>Azathioprine, Cyclosporin (Neoral ®), Tacrolimus (Advagraal ®, Progal ®), Methotrexate, Mycophenolic Acid (Ceptava ®, Myfortic ®) Mycophenolate Mofetil (Cellcept ®, Mycofenax ®), Sirolimus</i>
<b>Medicines for Parkinson's Disease</b>	<i>Co-beneldopa (Madopar ®), Co-careldopa (Sinemet ®), Entacapone, Rotigotine, Ropinirole, Pramipexole, Stalevo ®, Sastravi ®</i>
<b>Strong Opioids for acute or chronic pain</b>	<i>Buprenorphine (Butec ®), Fentanyl, Methadone, Midazolam, Morphine, Oxycodone</i>
<b>Substance Misuse Treatment</b>	<i>Buprenorphine (Subutex ®), Methadone</i>
<b>Any medication being used for end-of-life care</b>	

# Obtaining Critical Medications

It is the care home's responsibility to ensure that residents always have enough supply of their medications. Prescriptions for critical medicines should be obtained following the normal medication ordering process. If an interim order is required, please highlight that it is a critical medication to the GP practice and community pharmacy, and how many doses the resident has remaining to allow them to process appropriately. If the medication is required out of hours you can obtain an emergency supply from the pharmacy.



For more information on how to obtain an emergency supply of a medication from a pharmacy, please visit <https://www.nhs.uk/nhs-services/prescriptions/emergency-prescriptions/>